



# Office of General Services

**DESIGN & CONSTRUCTION GROUP  
THE GOVERNOR NELSON A. ROCKEFELLER  
EMPIRE STATE PLAZA  
ALBANY, NY 12242**

---

## **ADDENDUM NO. 3 TO PROJECT NO. 47119**

**CONSTRUCTION WORK  
PROVIDE EXIT STAIRCASE, BUILDING 106  
KIRBY FORENSIC PSYCHIATRIC CENTER  
600 EAST 125TH STREET  
WARDS ISLAND, NY**

September 12, 2025

<p><b>NOTE:</b> This Addendum forms a part of the Contract Documents. Insert it in the Project Manual. Acknowledge receipt of this Addendum in the space provided on the Bid Form.</p>
--

### **SPECIFICATIONS**

1. Page 096519 – 2, Paragraph 2.01.A: Add the following subparagraphs:
  - “1. Tile Standard: ASTM F1066, Class 1, solid color
  2. Color: Director’s Representative to select from manufacturers full range of selections.”
2. Page 096519 – 2, Paragraph 2.01.B: Add the following subparagraph:
  - “3. Color: Director’s Representative to select from manufacturers full range of selections.”

### **DRAWINGS**

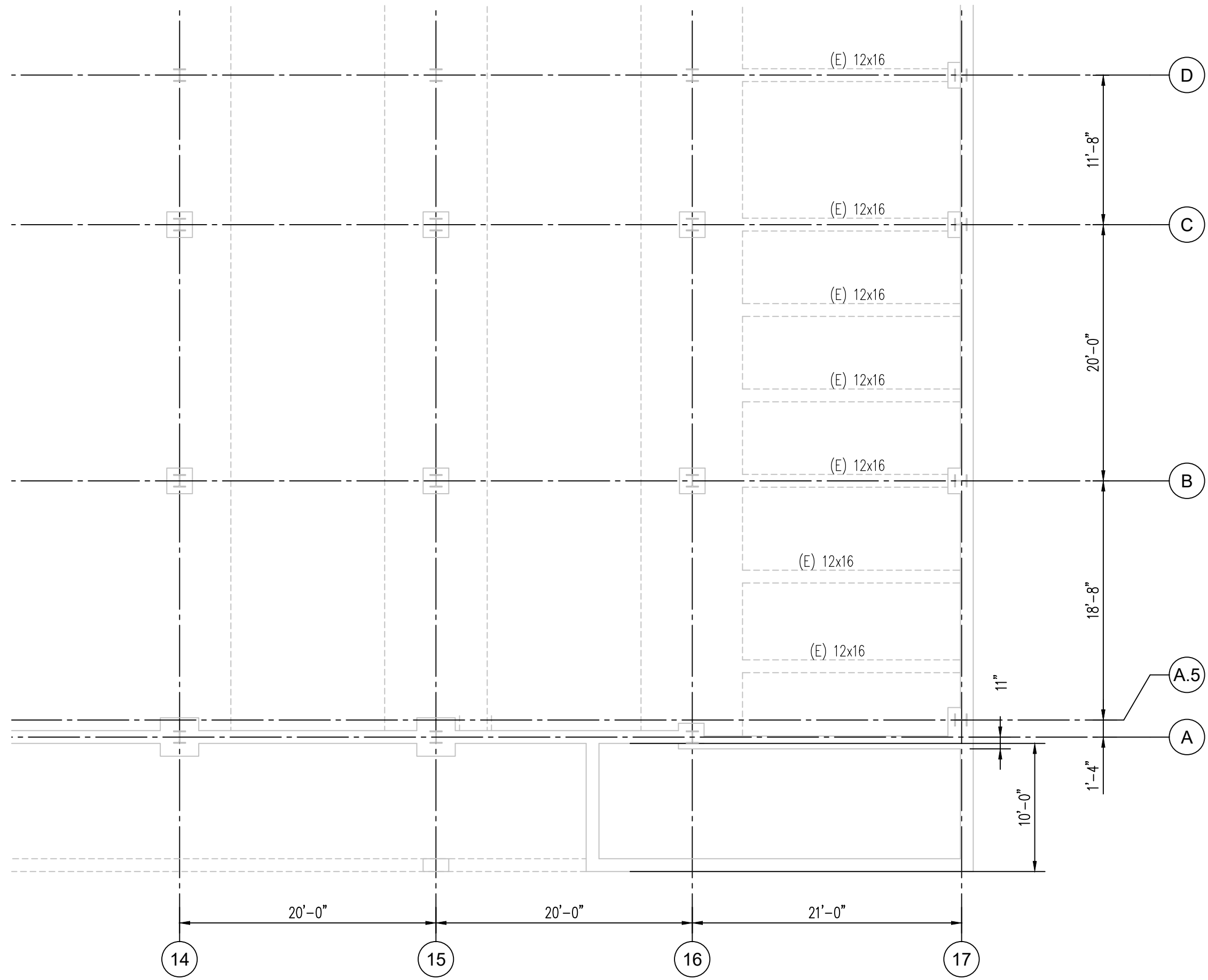
3. Revised Drawings:
  - a. Drawing Nos. S-100 and S-301, noted “ADDENDUM NO. 3, 09/12/2025”, accompany this Addendum and supersede the same numbered originally issued drawings.
4. Drawing No. S-101:
  - b. Basement Plan: Change “INJECT CRACKS WITH EPOXY. WHERE CRACKS ARE > 1/32”, INCLUDE MINIMUM 50 LF CRACK REPAIR IN BID. SEE DIVISION 03 SPECS” to read:

“INJECT CRACKS WITH EPOXY. WHERE CRACKS ARE > 1/32”, INCLUDE MINIMUM 50 LF, BY 3” DEEP, CRACK REPAIR IN BID. SEE DIVISION 03 SPECS.”

5. Drawing No. E-001:
  - c. TITLE BLOCK: Change Contract from “ELECTRICAL” to “CONSTRUCTION”
  
6. Drawing No. E-101:
  - d. TITLE BLOCK: Change Contract from “ELECTRICAL” to “CONSTRUCTION”
  - e. PLAN 1/E-101: Change title from “BASEMENT REMOVAL PLAN” to “SUB-BASEMENT REMOVAL PLAN”
  
7. Drawing No. E-111:
  - f. TITLE BLOCK: Change Contract from “ELECTRICAL” to “CONSTRUCTION”
  
8. Drawing No. E-511:
  - g. TITLE BLOCK: Change Contract from “ELECTRICAL” to “CONSTRUCTION”
  
9. Drawing No. E611:
  - h. TITLE BLOCK: Change Contract from “ELECTRICAL” to “CONSTRUCTION”

**END OF ADDENDUM**

Brady M. Sherlock, P.E.  
Director, Division of Design  
Design & Construction



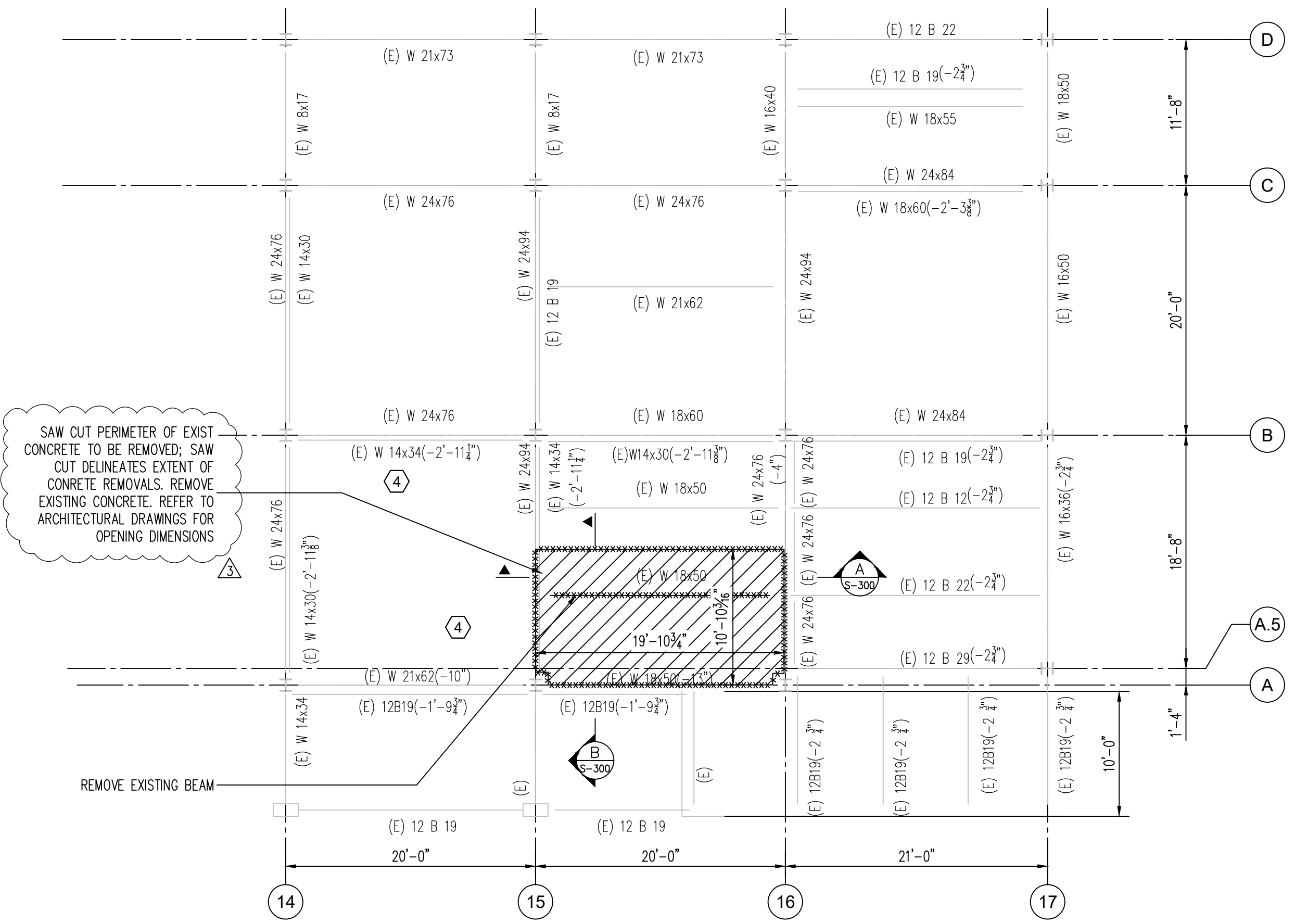
**A REMOVALS - BASEMENT PLAN**

S-100 NOTES:  
 1. SEE MEP FOR REMARKS AND RELOCATION OF PIPING/CONDUITS.  
 1/8"=1'-0"



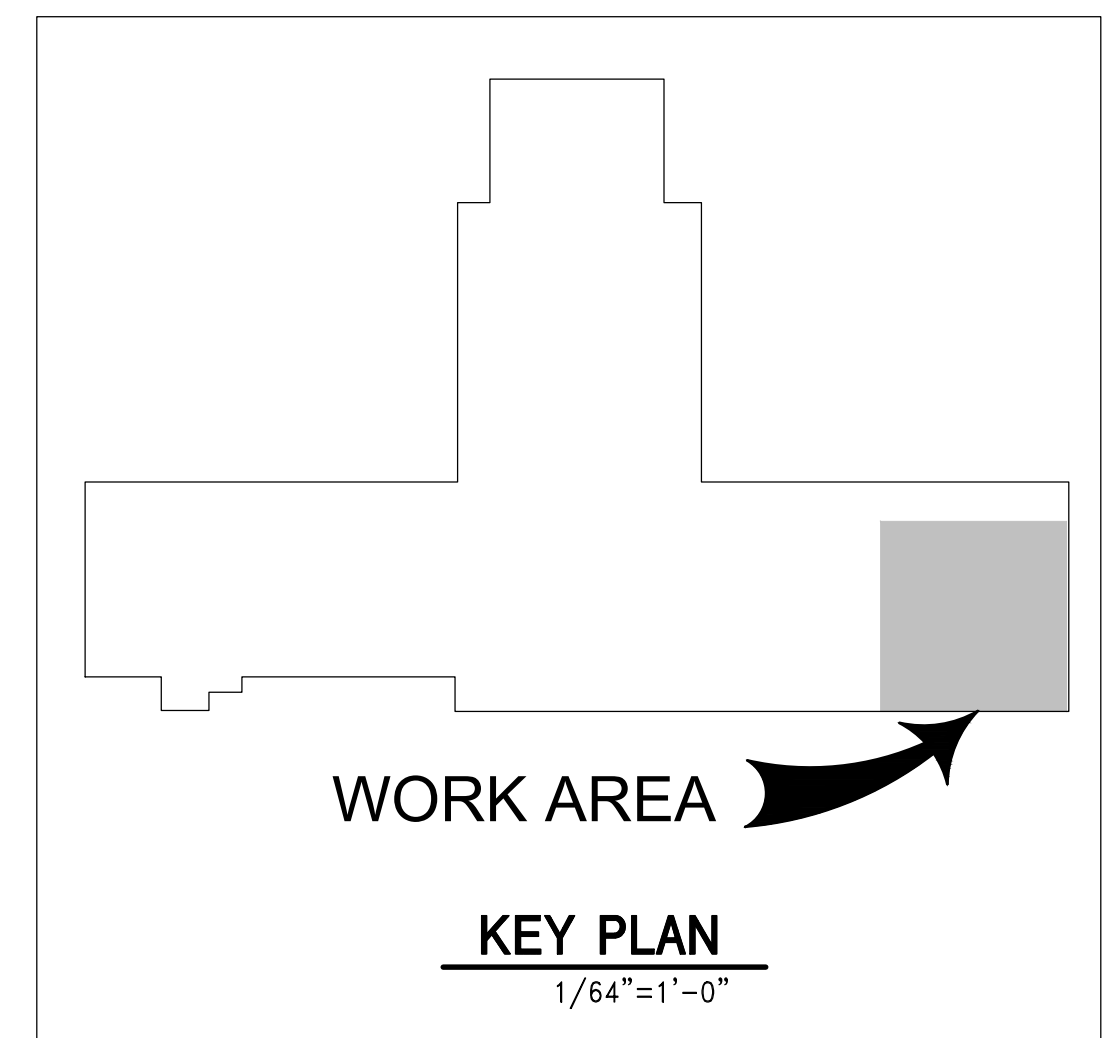
**B REMOVALS - FIRST FLOOR PLAN**

S-100  
 1/8"=1'-0"

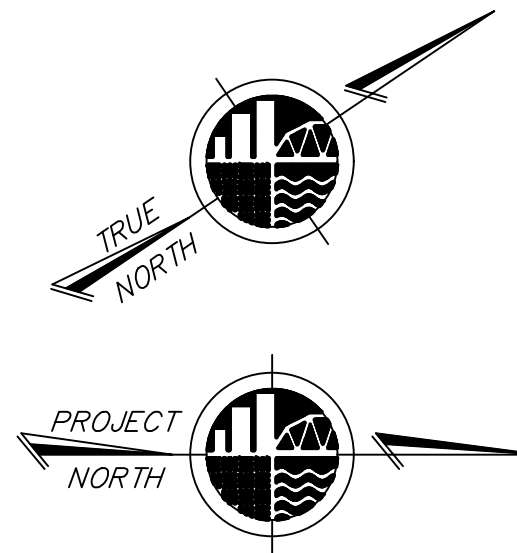


**C REMOVALS - SECOND FLOOR PLAN**

S-100  
 1/8"=1'-0"



- SUGGESTED SEQUENCING:**
1. LOCALLY REMOVE EXISTING CONCRETE STEEL BEAM ENCASING AS NECESSARY ON FIRST FLOOR AND FRAME IN BEAM.
  2. REMOVE LOWER SLAB FROM SECOND FLOOR.
  3. LOCALLY REMOVE EXISTING STEEL ENCASING AS NECESSARY ON SECOND FLOOR AND FRAME IN BEAM.
  4. REMOVE FIRST AND SECOND FLOOR SLAB, AND SECOND FLOOR BEAM.
  5. PATCH EXISTING SLAB EDGE AT REMOVAL PER ARCHITECTURAL DRAWINGS.
  6. INSTALL BEAMS AT EACH FLOOR WITH HANGERS.
  7. INJECT CONCRETE CRACKS.
  8. INSTALL BEAMS BELOW BASEMENT SLAB.
  9. INSTALL BLOCK WALL.



**NEW YORK STATE OF OPPORTUNITY** | **Office of General Services**  
 DESIGN & CONSTRUCTION

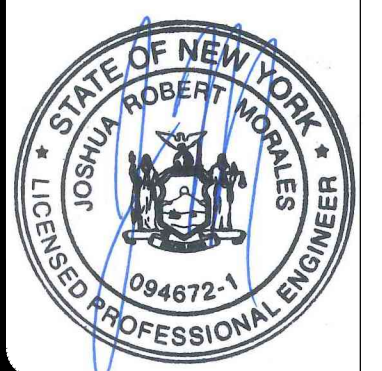
CONSULTANT  
**bell & spina** ARCHITECTS

**MCLaren** ENGINEERING GROUP  
 M. G. McLaren Engineering and Land Surveying P.C.  
 530 Chestnut Ridge Road  
 Woodcliff Lake, NJ 07677  
 T: 201.775.6000 www.mgmlaren.com

**ENERGY CODE STATEMENT:**  
 TO THE BEST OF THE REGISTERED DESIGN PROFESSIONAL'S KNOWLEDGE, BELIEF AND PROFESSIONAL JUDGEMENT, THESE PLANS AND/OR SPECIFICATIONS ARE IN COMPLIANCE WITH THE 2020 ENERGY CODE.

**UNIFORM CODE STATEMENT:**  
 TO THE BEST OF THE REGISTERED DESIGN PROFESSIONAL'S KNOWLEDGE, BELIEF AND PROFESSIONAL JUDGEMENT, THESE PLANS AND/OR SPECIFICATIONS ARE IN COMPLIANCE WITH THE 2020 UNIFORM CODE.

**WARNING:**  
 THE ALTERATION OF THIS MATERIAL IN ANY WAY, UNLESS DONE UNDER THE DIRECTION OF A COMPARABLE PROFESSIONAL, I.E. ARCHITECT FOR AN ARCHITECT, ENGINEER FOR AN ENGINEER OR LANDSCAPE ARCHITECT FOR A LANDSCAPE ARCHITECT, IS A VIOLATION OF THE NEW YORK STATE EDUCATION LAW AND/OR REGULATIONS AND IS A CLASS "A" MISDEMEANOR.



**CONSTRUCTION**

TITLE:  
 PROVIDE EXIT STAIRCASE, BUILDING 106

LOCATION:  
 KIRBY FORENSIC PSYCH CTR  
 600 EAST 125TH STREET  
 WARDS ISLAND, NY

CLIENT:  
 NYS OFFICE OF MENTAL HEALTH

MARK	DATE	DESCRIPTION
3	12 SEPT 2025	ADDENDUM NO. 3
	28 MAY 2025	RE-BID DOCUMENTS

PROJECT NUMBER: **47119-C**

DESIGNED BY: ADM  
 DRAWN BY: ADM  
 FIELD CHECK: ----  
 APPROVED: JRM

SHEET TITLE:  
**REMOVALS - FLOOR PLANS**

DRAWING NUMBER:  
**S-100**

SHEET 5 OF 40

FILE NAME: P:\Proj21021004310\_Degps\CADD\Ext Stairs-100 Floor Plans, Sections & Details.dwg PLOT TIME: Thu, 11 Sep 2025 - 3:39pm LAST SAVE: Thu, 11 Sep 2025 - 3:27pm BY: William O'Connor



ENERGY CODE STATEMENT:  
TO THE BEST OF THE REGISTERED DESIGN PROFESSIONAL'S KNOWLEDGE, BELIEF AND PROFESSIONAL JUDGEMENT, THESE PLANS AND/OR SPECIFICATIONS ARE IN COMPLIANCE WITH THE 2020 ENERGY CODE.

UNIFORM CODE STATEMENT:  
TO THE BEST OF THE REGISTERED DESIGN PROFESSIONAL'S KNOWLEDGE, BELIEF AND PROFESSIONAL JUDGEMENT, THESE PLANS AND/OR SPECIFICATIONS ARE IN COMPLIANCE WITH THE 2020 UNIFORM CODE.

WARNING:  
THE ALTERATION OF THIS MATERIAL IN ANY WAY, UNLESS DONE UNDER THE DIRECTION OF A COMPARABLE PROFESSIONAL, I.E. ARCHITECT FOR AN ARCHITECT, ENGINEER FOR AN ENGINEER OR LANDSCAPE ARCHITECT FOR A LANDSCAPE ARCHITECT, IS A VIOLATION OF THE NEW YORK STATE EDUCATION LAW AND/OR REGULATIONS AND IS A CLASS "A" MISDEMEANOR.



CONTRACT: CONSTRUCTION

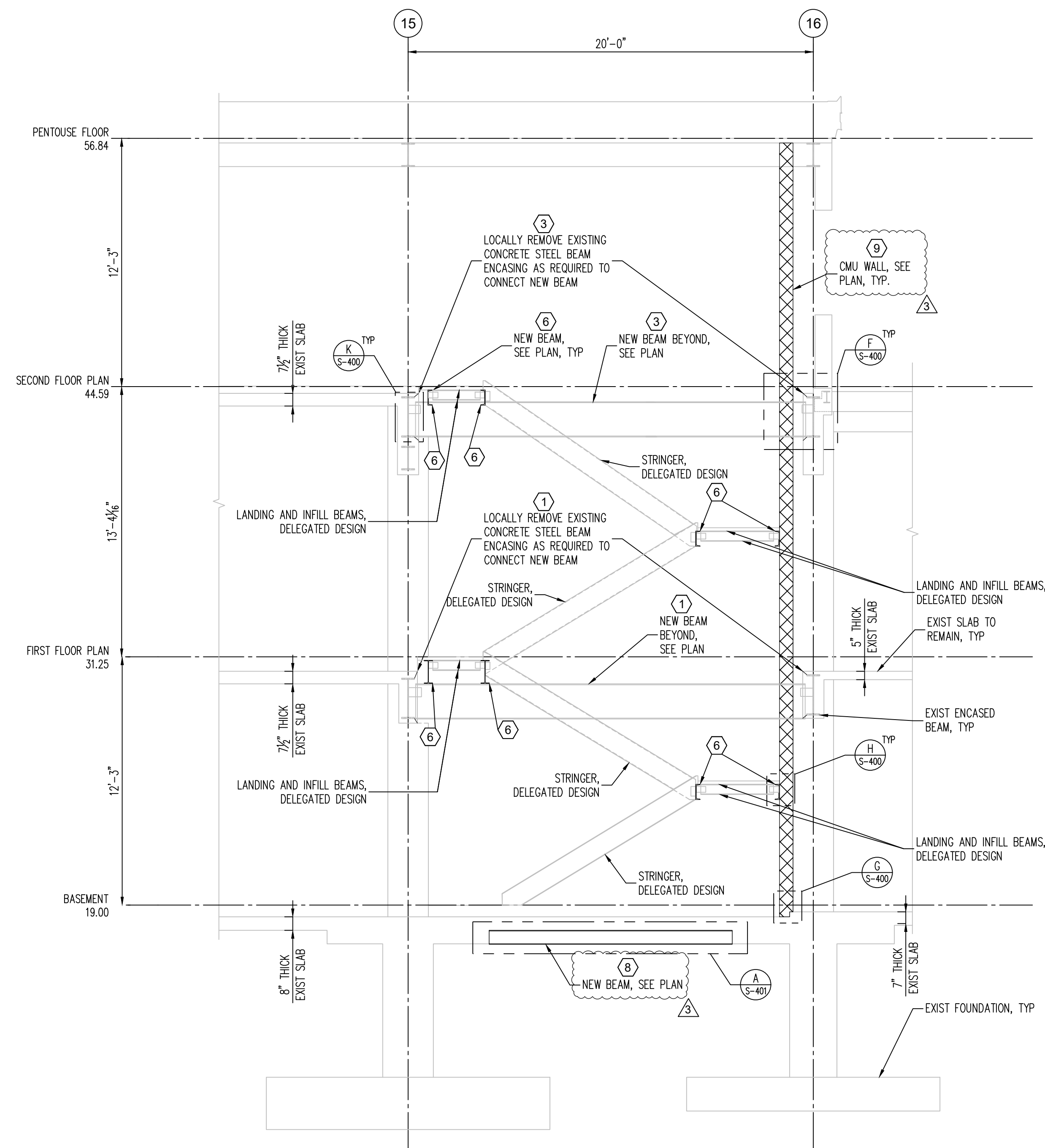
TITLE: PROVIDE EXIT STAIRCASE, BUILDING 106

LOCATION: KIRBY FORENSIC PSYCH CTR  
600 EAST 125TH STREET  
WARDS ISLAND, NY

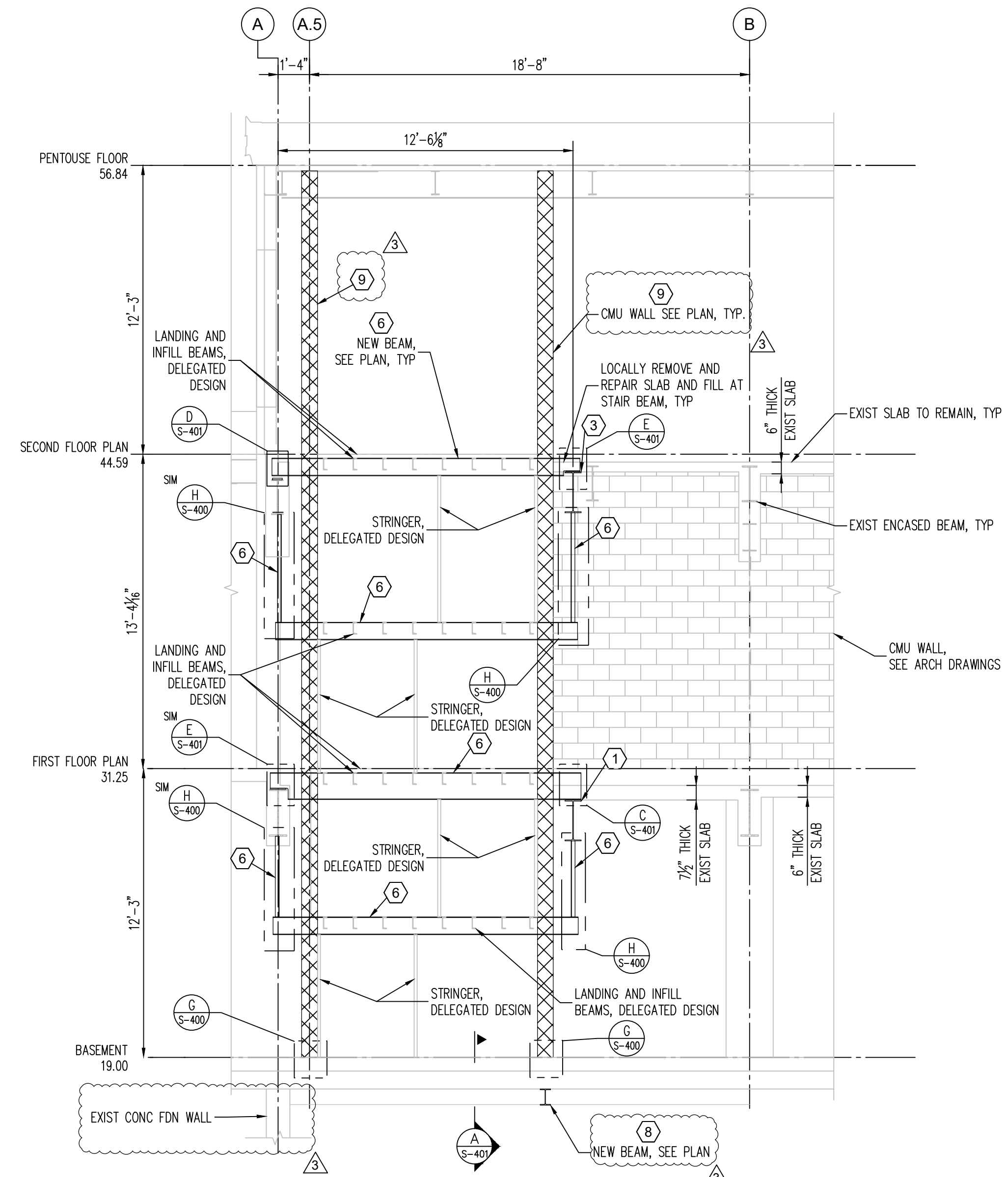
CLIENT: NYS OFFICE OF MENTAL HEALTH

SUGGESTED SEQUENCING:

- 1 LOCALLY REMOVE EXISTING CONCRETE STEEL BEAM ENCASING AS NECESSARY ON FIRST FLOOR AND FRAME IN BEAM.
- 2 REMOVE LOWER SLAB FROM SECOND FLOOR.
- 3 LOCALLY REMOVE EXISTING STEEL BEAM ENCASING AS NECESSARY ON SECOND FLOOR AND FRAME IN BEAM.
- 4 REMOVE FIRST AND SECOND FLOOR SLAB, AND SECOND FLOOR BEAM.
- 5 PATCH EXISTING SLAB EDGE AT REMOVAL PER ARCHITECTURAL DRAWINGS.
- 6 INSTALL BEAMS AT EACH FLOOR WITH HANGERS.
- 7 INJECT CONCRETE CRACKS.
- 8 INSTALL BEAMS BELOW BASEMENT SLAB.
- 9 INSTALL BLOCK WALL.



**A SECTION BETWEEN COLUMN A&B**  
S-301 1/4"=1'-0"



**B SECTION BETWEEN COLUMN 15&16**  
S-301 1/4"=1'-0"

NOTE: SEE S-101 FOR BEAM SIZES AND ELEVATIONS.

FILE NAME: P:\Proj2\021004310\_Deggs\CADD\Exit Stairs\301\_Section.dwg PLOT TIME: Thu, 11 Sep 2025, 3:41pm LAST SAVE: Thu, 11 Sep 2025, 3:22pm BY: William.O'Connor

MARK	DATE	DESCRIPTION
3	12 SEPT 2025	ADDENDUM NO. 3
	28 MAY 2025	RE-BID DOCUMENTS
PROJECT NUMBER:	<b>47119-C</b>	
DESIGNED BY:	ADM	
DRAWN BY:	ADM	
FIELD CHECK:	----	
APPROVED:	JRM	

SHEET TITLE:  
**SECTIONS**

DRAWING NUMBER:  
**S-301**

SHEET 8 OF 40